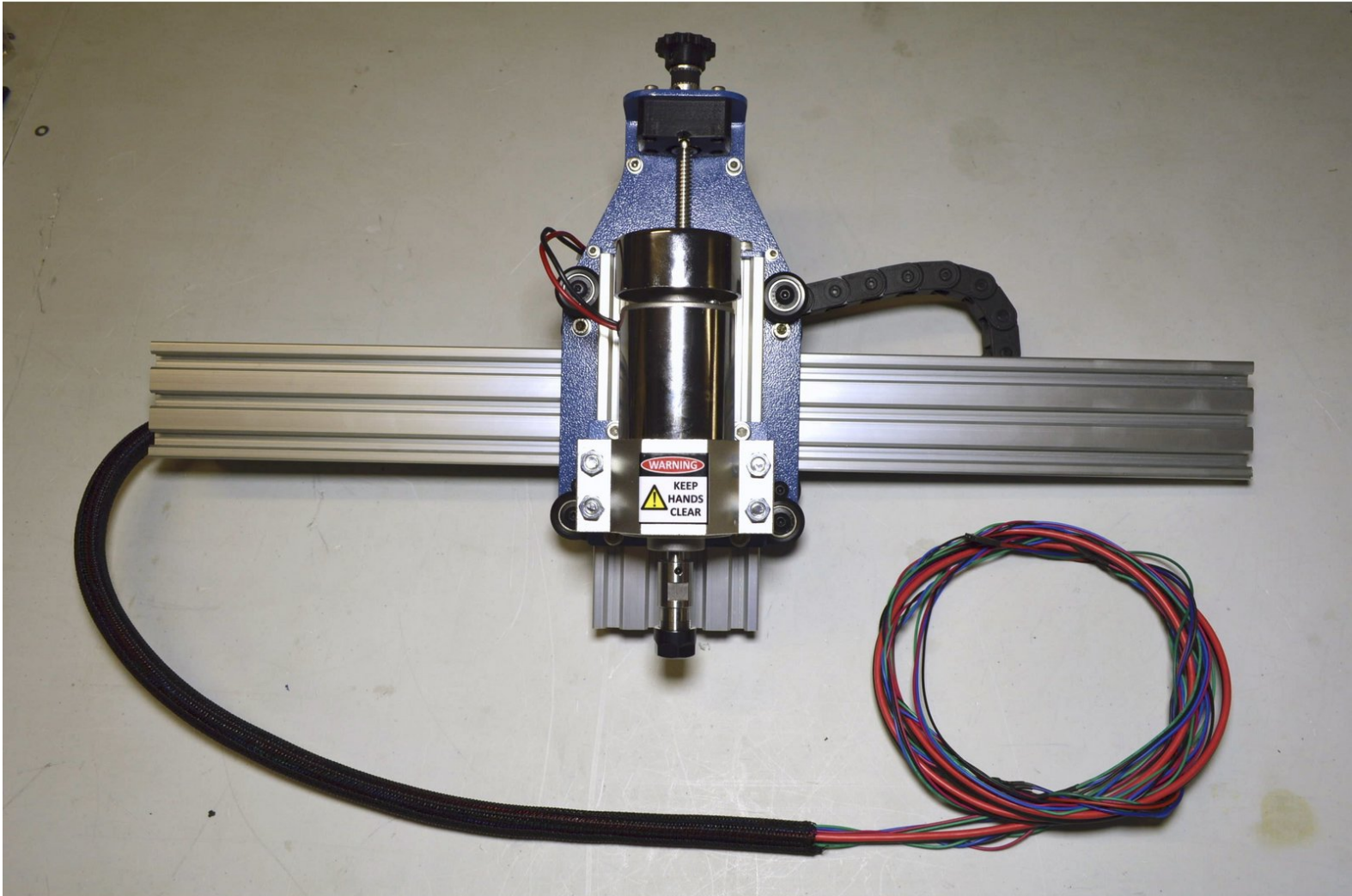


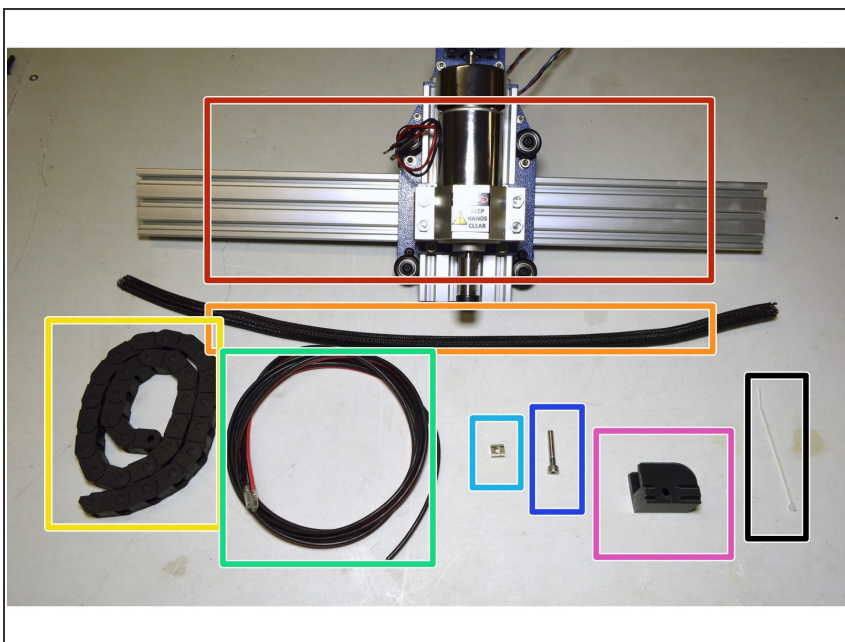
cron

13. Mount X-Axis Drag Chain

Written By: Paul Cronje



Step 1 — Parts Required



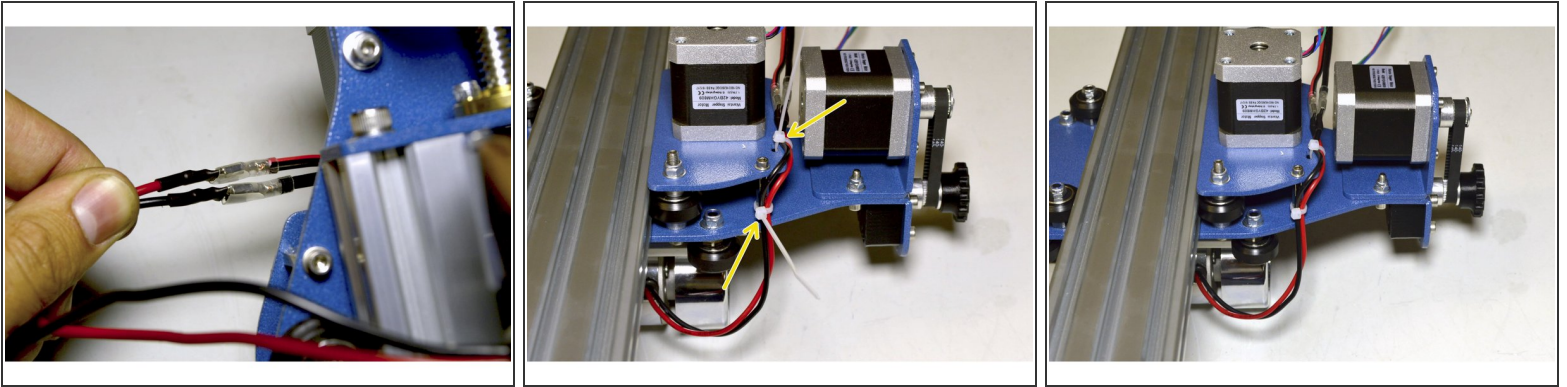
- X-Axis Assembly
- 12mm Webbing, 500mm
- 10x10mm Drag Chain, 30 Links
- Spindle Cable
- Slide T-Nut M5
- M5x30 Cap Screw
- X-Axis Drag Chain Bracket
- Cable Ties, 2.5mm (2 Pcs)

Step 2 — Tools Required



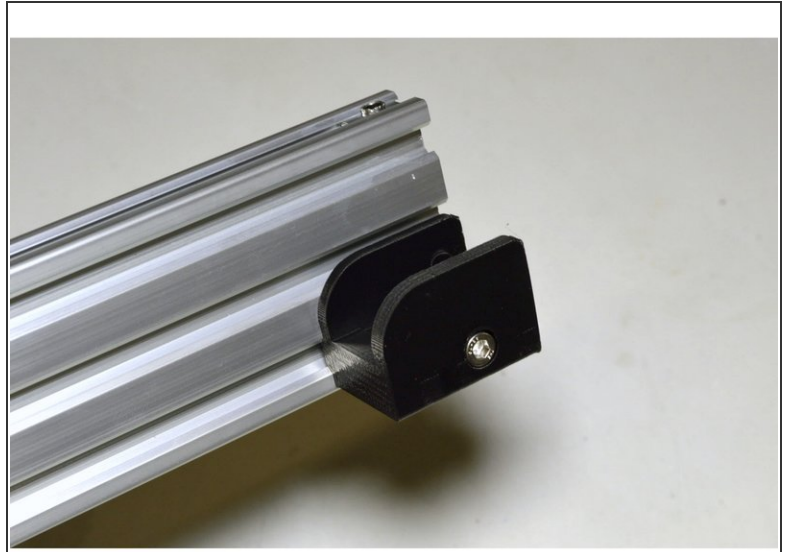
- 4mm Allen Key
- Partly Pratlock
- Side Cutter

Step 3 — Extend Spindle Cable



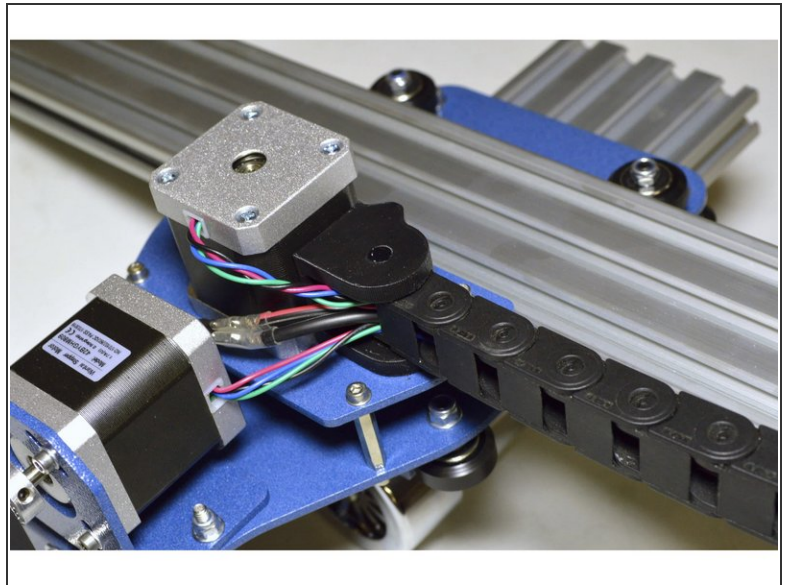
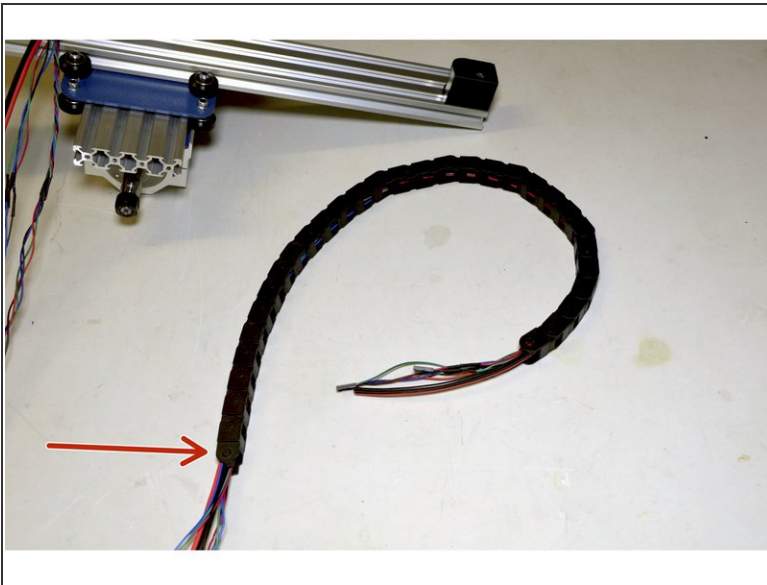
- Plug the Spindle Cable extension onto the cables of the spindle cable
- Plug the red cable onto the red cable and the black cable onto the black cable
- Tie the cable down with cable ties (2 Pcs) so that the connectors are positioned between the X and Z-Motor (This will ensure the spindle cable has enough slack for the spindle to move up and down)
- The one cable tie goes through the slot provided the other goes around the standoff as shown

Step 4 — Attach Drag Chain Bracket



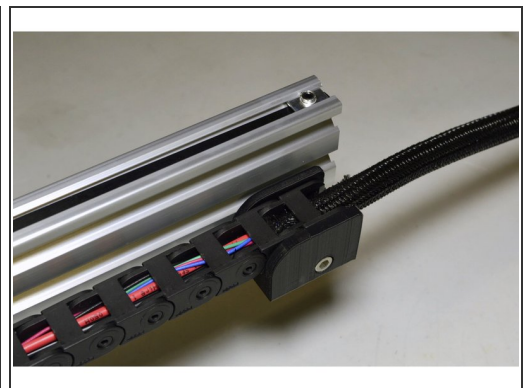
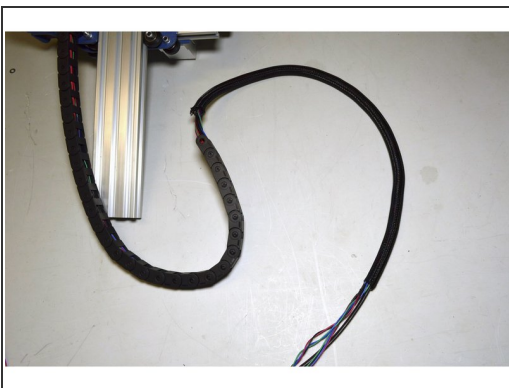
- Slide the M5x30 Cap Screw into the hole in the X-Axis Drag Chain Bracket
- Add Pratley Pratlock to the screw and screw the Slide T-Nut onto the end of the screw
- Slide the Drag Chain Bracket into the bottom slot at the back left corner of the 20x60 V-Slot Profile
- Tighten the M5x30 screw with the 4mm Allen Key

Step 5 — Add Drag Chain



- Slide the 10x10 Drag Chain over the 3 cables running from the spindle assembly with the side with the pins on the Drag Chain closest to the Spindle Assembly
- Slide the Drag Chain all the way to the spindle and click it into the drag chain bracket on the spindle assembly

Step 6 — Add Webbing



- Slide the webbing over the cables
- Push the webbing into the Drag Chain for 2 to 3 links
- Click the other side of the Drag Chain into the Drag Chain Bracket at the back of the V-Slot profile

