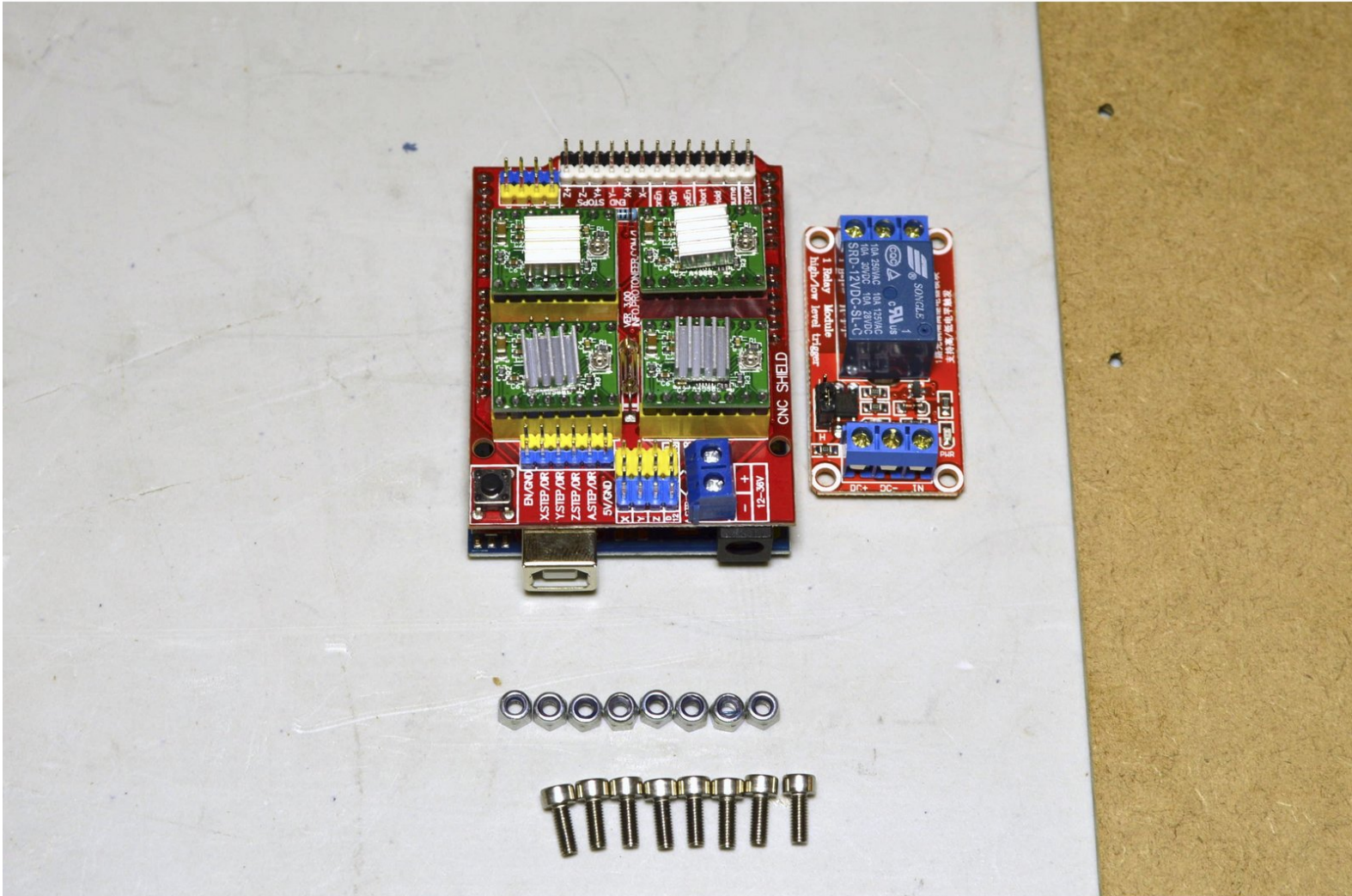


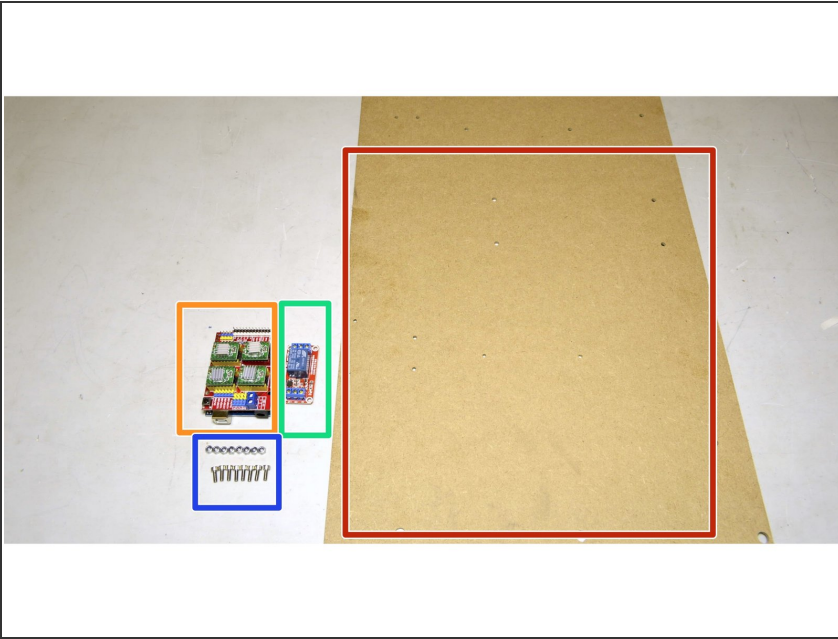
cron

# 16. Mount Electronics

Written By: Paul Cronje

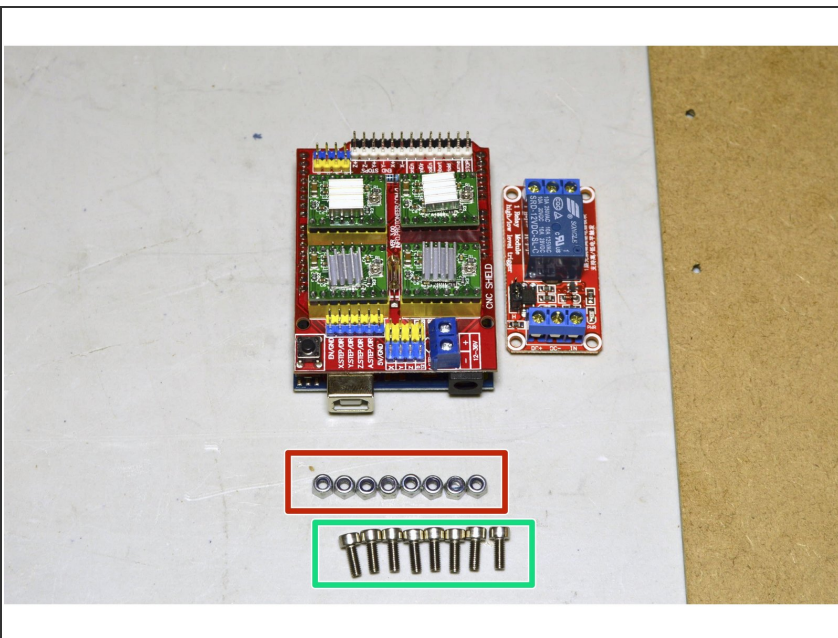


## Step 1 — Parts Required: 1



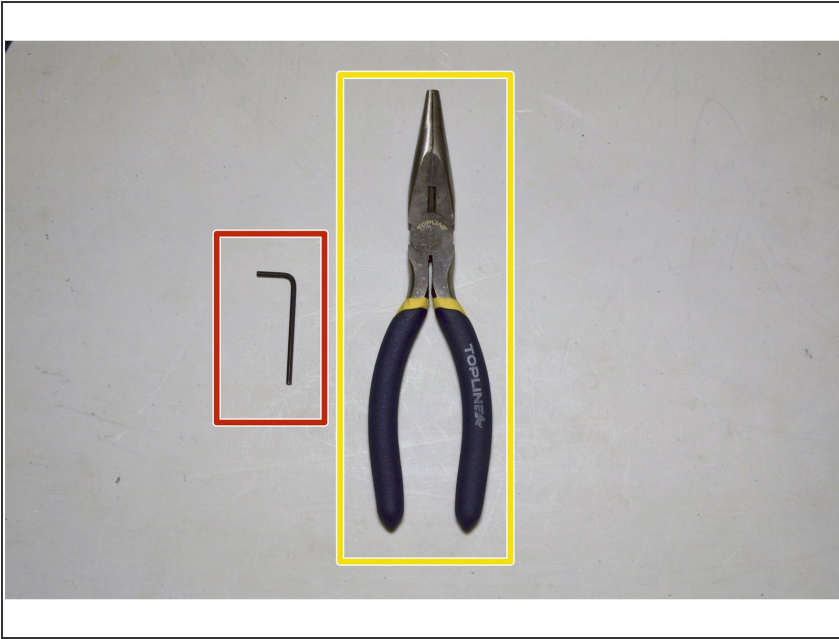
- Electronics MDF board
- CNC Electronics Module
- Relay Module
- Nuts & Bolts (see next step)

## Step 2 — Parts Required: 2



- M3 Lock Nut (8 Pcs)
- M3x10 Cap Screw (8 Pcs)

### Step 3 — Tools Required

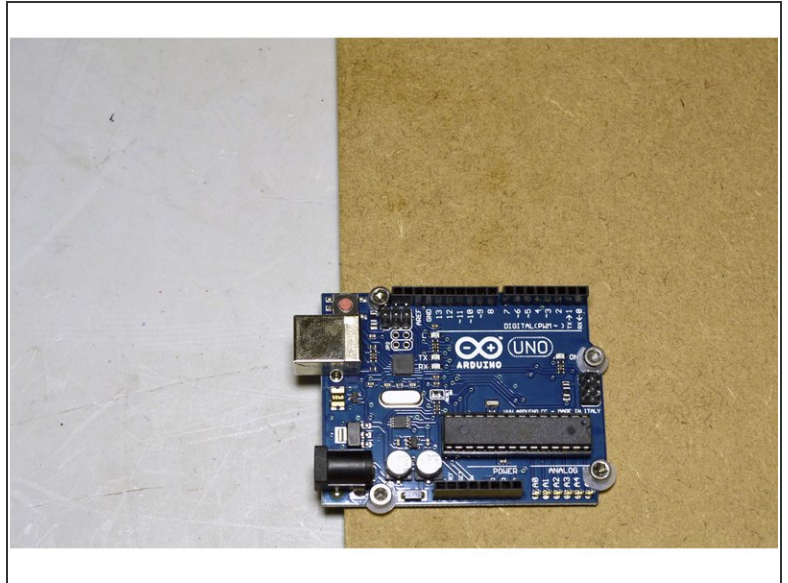
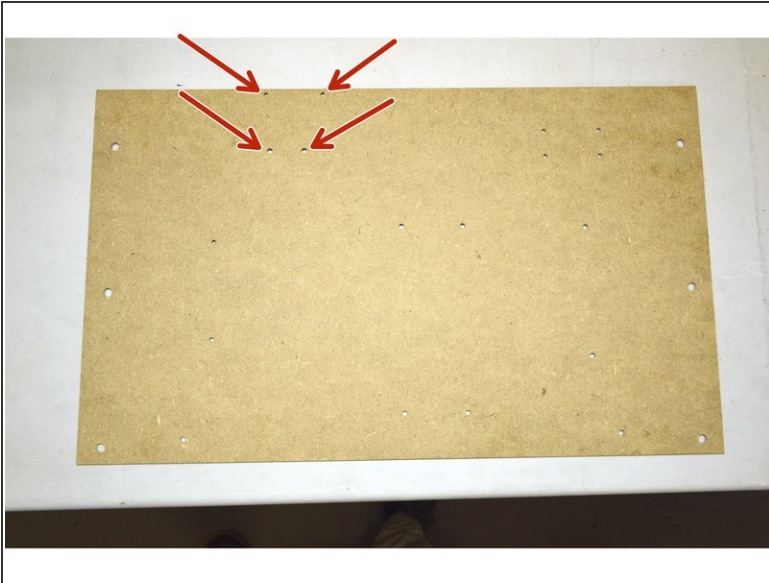


● 2.5mm Allen Key

● Sharp nose pliers



## Step 4 — Mount the controller board



- Remove the Arduino Uno from the CNC shield
- Mount the Arduino Uno with the M3x10 Cap Screws (4 Pcs) and the M3 Lock Nuts (4 Pcs) in the holes shown in red in the picture
- Do not over tighten the screws, just make sure the board is secure
- Assemble the CNC shield back onto the Arduino Uno. Make sure all the pins goes back into the headers on the Arduino.

## Step 5 — Mount Relay



- If you are installing a laser assembly as well you will need to follow the following link and do not fasten this relay. [03. Prepare the new relay assembly](#)
- Mount the relay with the M3x10 Cap Screws (4 Pcs) and the M3 Lock Nuts (4 Pcs) in the holes shown in green in the picture
- Do not over tighten the screws, just make sure the relay is secure