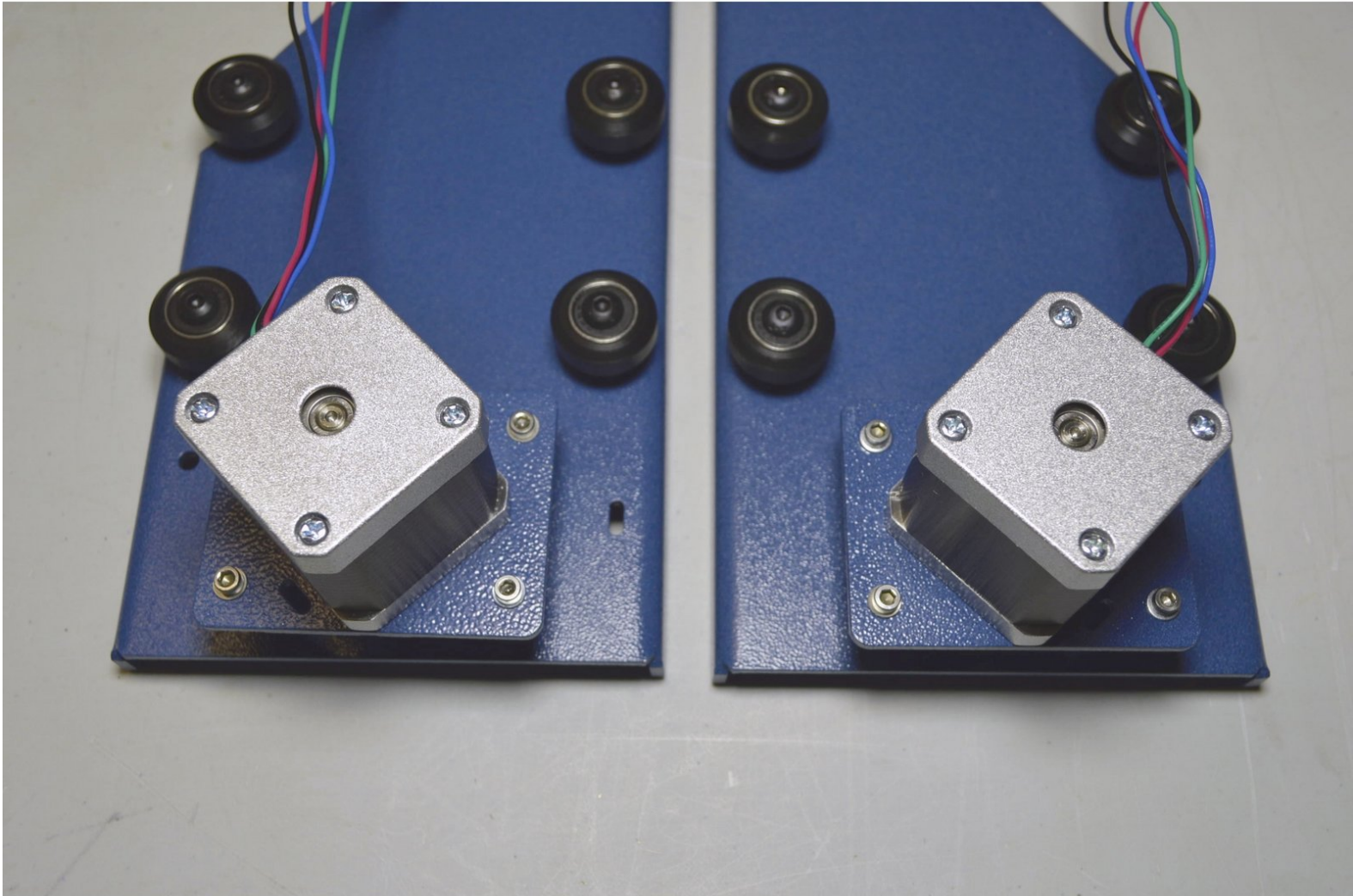


cron

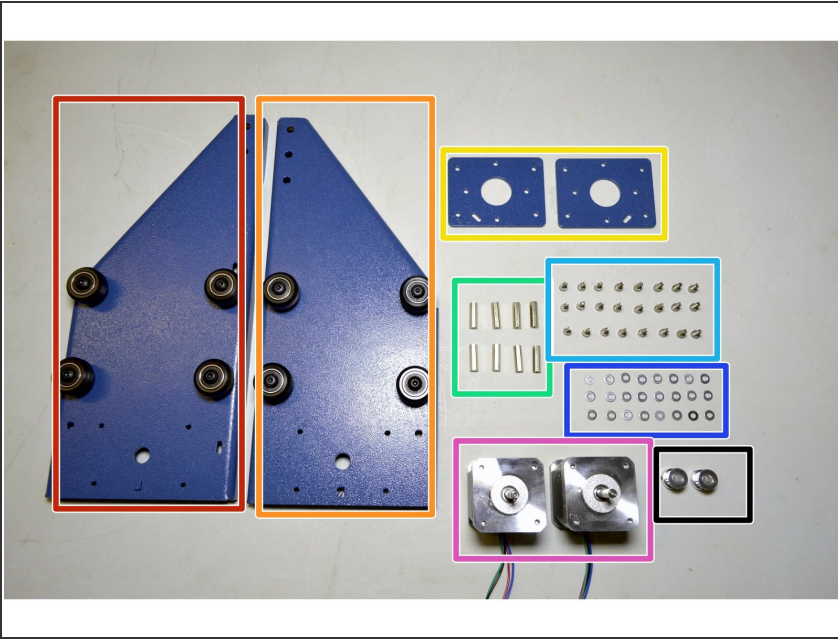
02. Y-Axis Motor Assembly

Written By: Paul Cronje



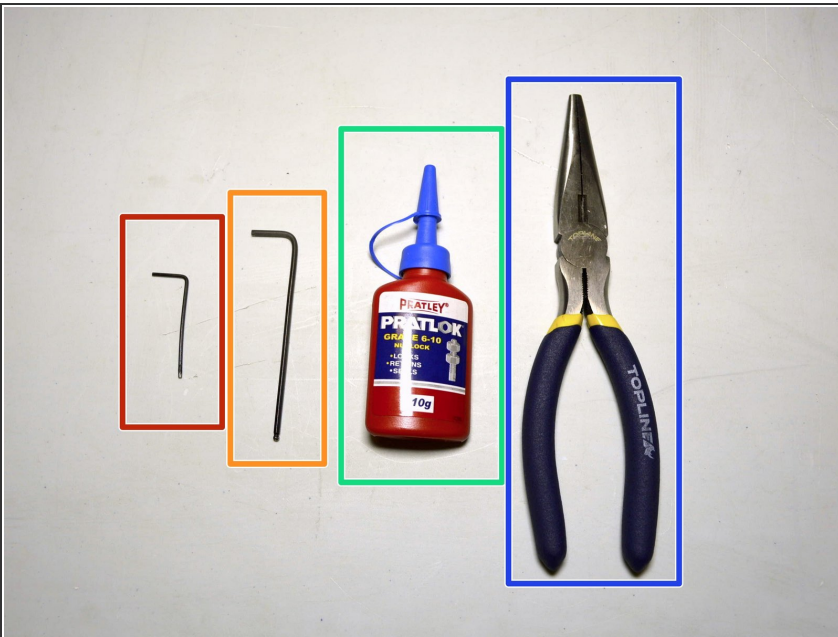
INTRODUCTION

Step 1 — Parts Required



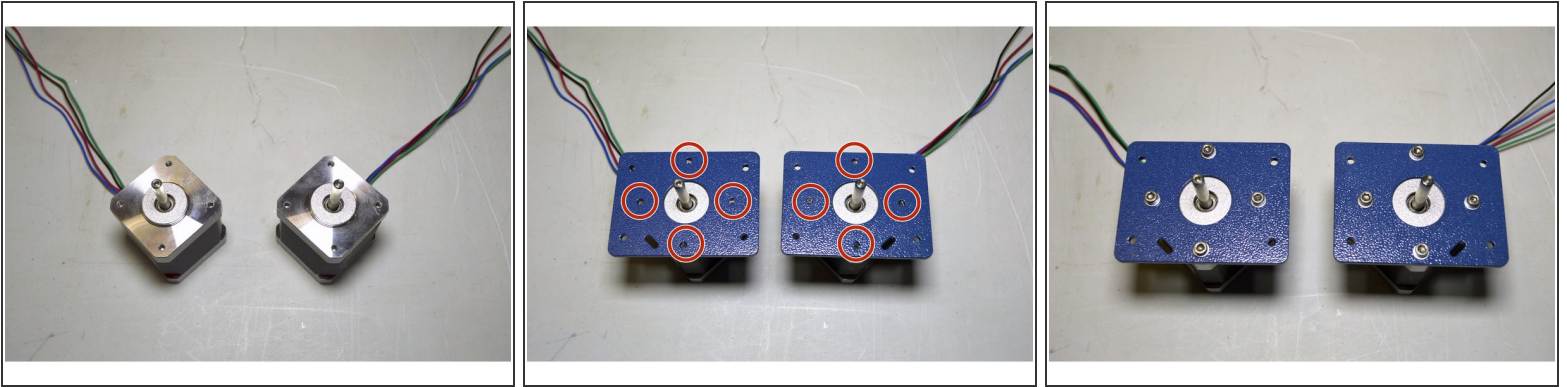
- Left Y-axis Rail Assembly
- Right Y-axis Rail Assembly
- Y-Motor Plate (2 Pcs)
- Standoff, M3x18, Female-Female (8 Pcs)
- M3x8 Cap Screw (24 Pcs)
- M3 Washer (16 Pcs)
- Y-Motor (2 Pcs)
- GT2 Pulley, 16 teeth (2 Pcs)

Step 2 — Tools required



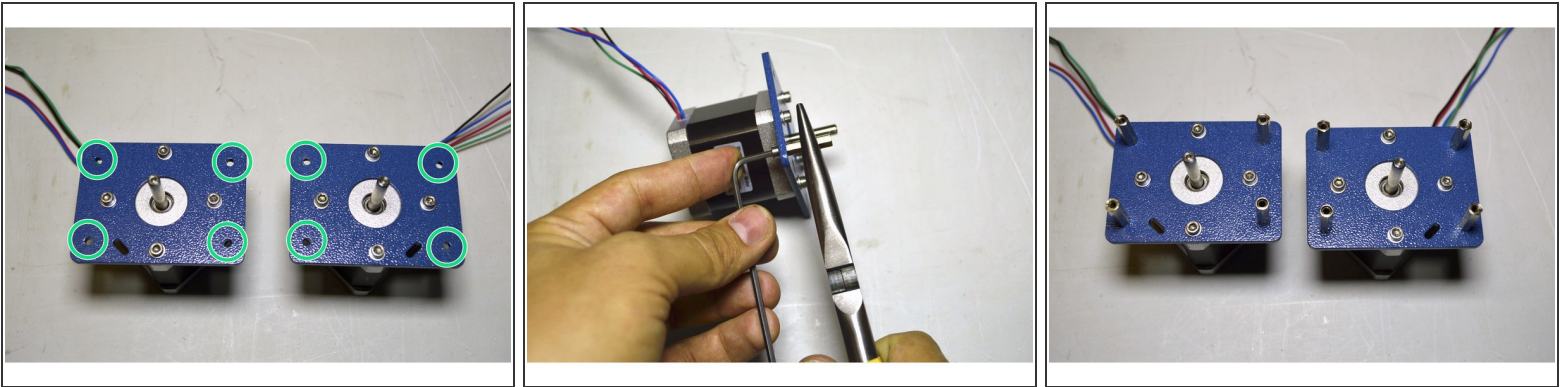
- 1.5mm Allen Key
- 2.5mm Allen Key
- Pratley Pratlock (Included in kit)
- Sharp Nose Pliers

Step 3 — Mount Motor Plates to Motors



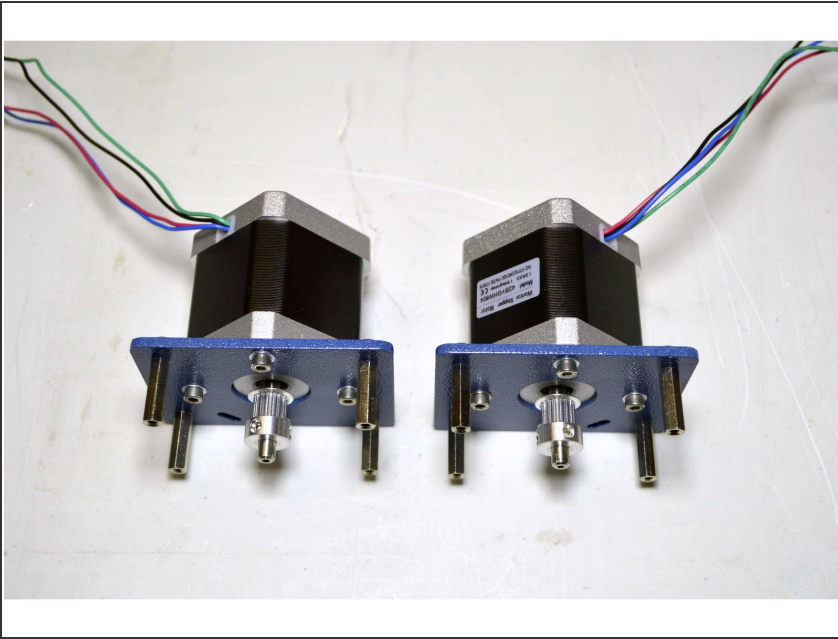
- Place motors as shown in picture
- Place Y-motor plates as shown in picture
- Mount motors to motor plates with M3x8 cap screws (8 Pcs), M3 washers (8 Pcs) and Pratley Pratlock by using the 2.5mm Allen Key

Step 4 — Mount standoffs onto motor plate



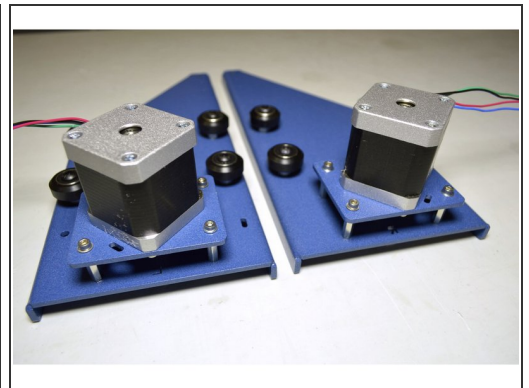
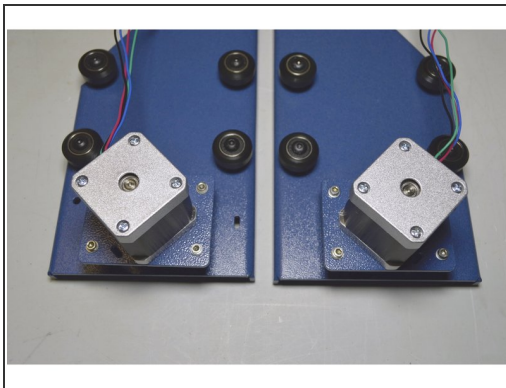
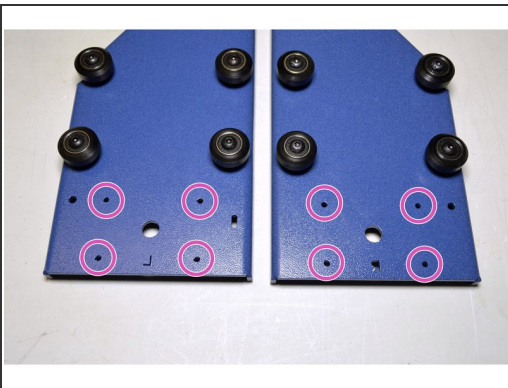
- Mount the M3x18 standoffs (8 Pcs) with the M3x8 cap screws (8 Pcs), M3 washers (8 Pcs) and Pratley Platlock in the holes as indicated
- Hold the standoff with the sharp nose pliers while tightening the M3 cap screw with the 2.5mm Allen Key

Step 5 — Mount the pulleys tot the motors



- Fix the GT2 pulleys (2 Pcs) to the motor shafts with the thin flanch facing towards the motor
- Tighten the grub screws with the 1.5mm Allen Key

Step 6



- Place the left and right Y-Motor rails as shown
- Place the Y-Motor assemblies as shown
- Mount the Y-motor assemblies to the Y-motor rails with the M3x8 cap screws (8 Pcs), M3 washers (8 Pcs) and Pratley Pratlock through the holes indicated