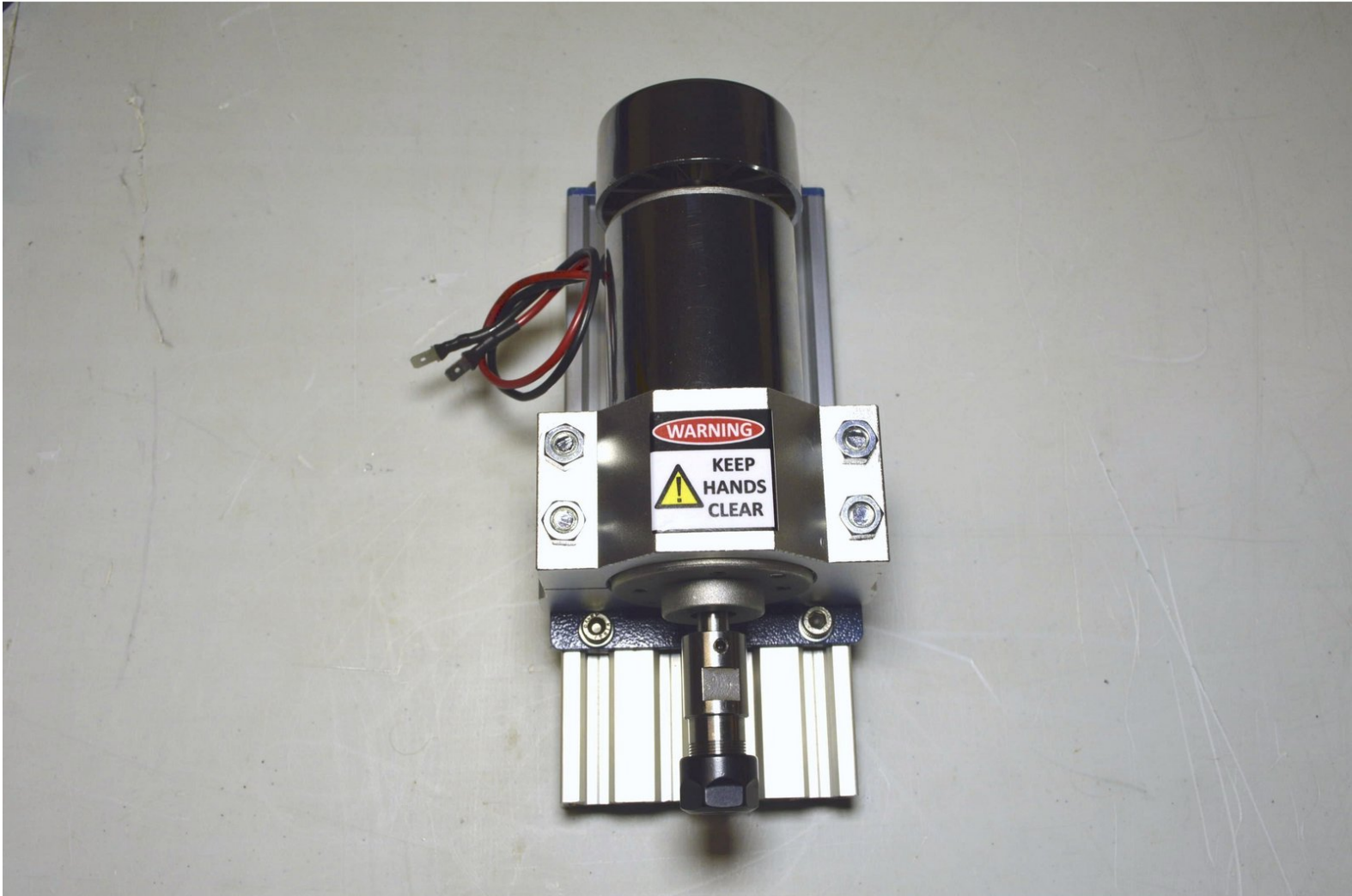


cron

## 06. Z-Axis Rail

Written By: Paul Cronje

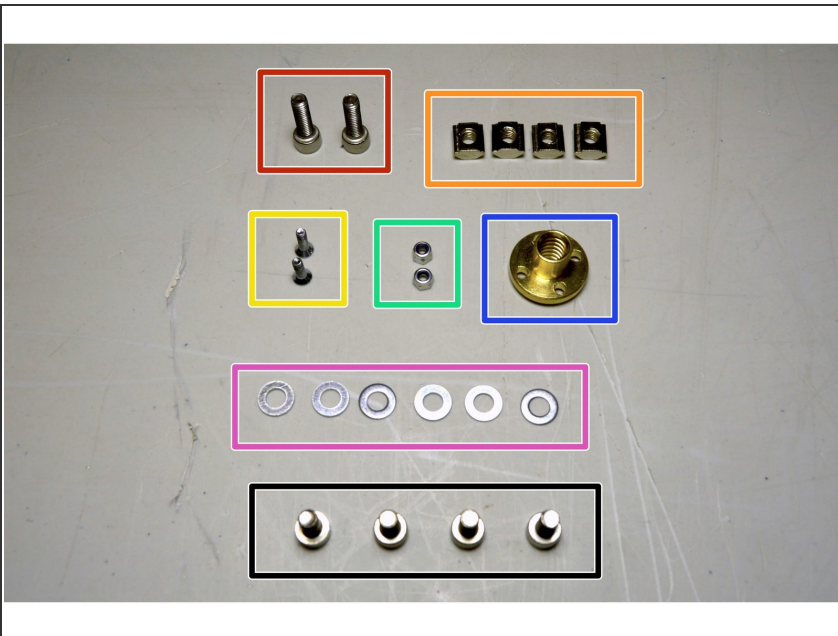


## Step 1 — Parts required: 1



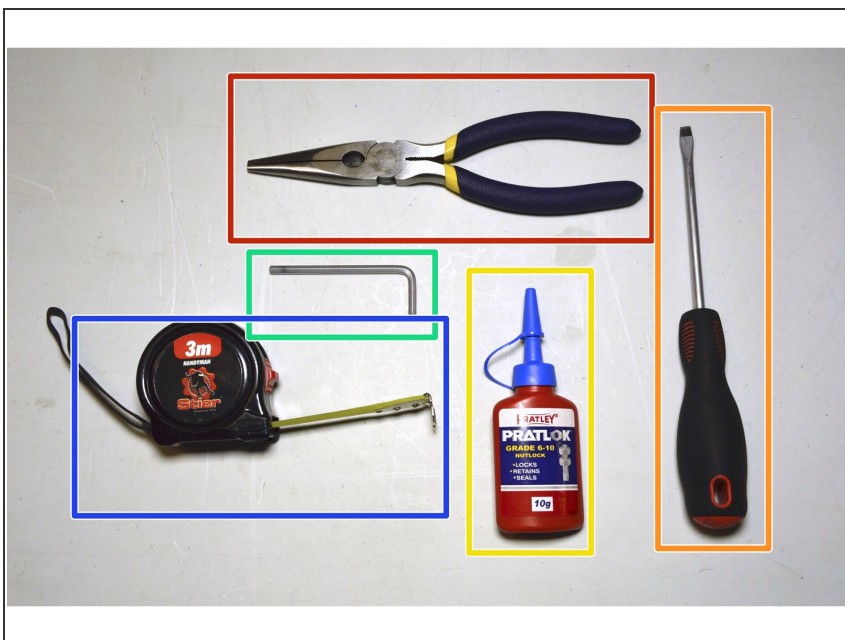
- Spindle Assembly
- 20x80 V-Slot Profile
- Lead Screw Plate
- Nuts & Bolts (see next step)

## Step 2 — Parts required: 2



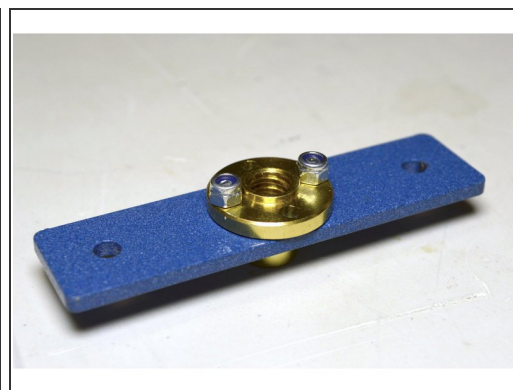
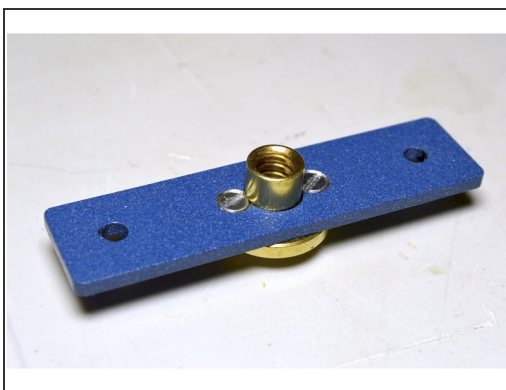
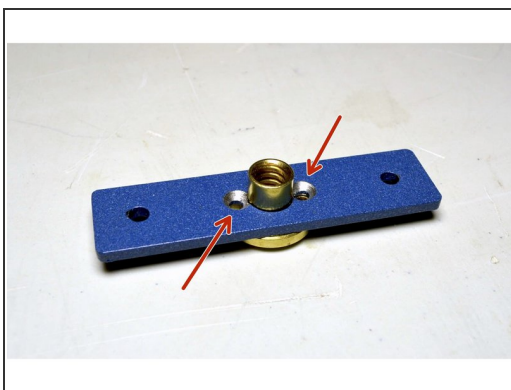
- M5x16 Cap Screw (2 Pcs)
- M5 Slide T-Nut (4 Pcs)
- M3x10 Counter Sunk Screw (2 Pcs)
- M3 Lock Nut (2 Pcs)
- Lead Screw Brass Nut
- M5 Washer (6 Pcs)
- M5x10 Cap Screw (4 Pcs)

### Step 3 — Tools required



- Sharp Nose Pliers
- Flat Screw Driver
- Pratley Pratlock
- 4mm Allen Key
- Measuring Tape

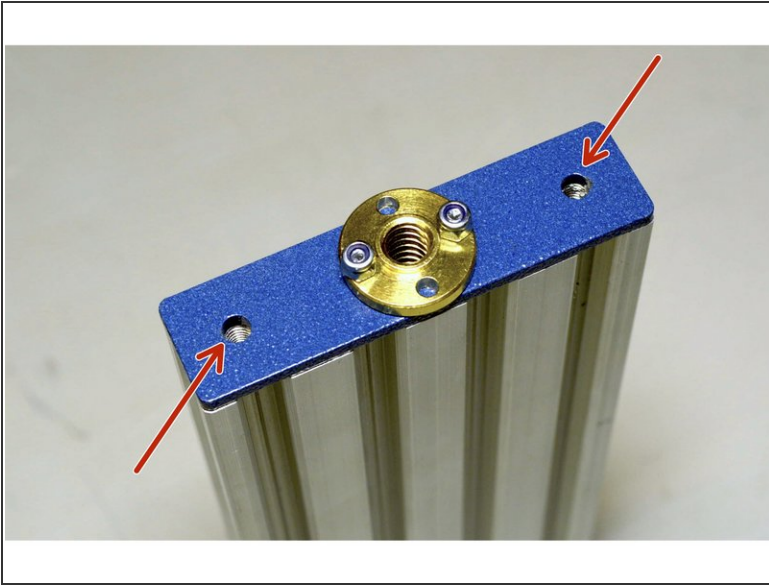
### Step 4 — Mount lead screw nut



- Place the Lead Screw Plate over the lead screw nut as shown in the picture
- Insert the M3x10 counter sunk screws (2 Pcs) into the two counter sunk holes
- Fix the lead screw nut with the M3 lock nuts (2 Pcs) by using the flat screw driver and the sharp nose pliers

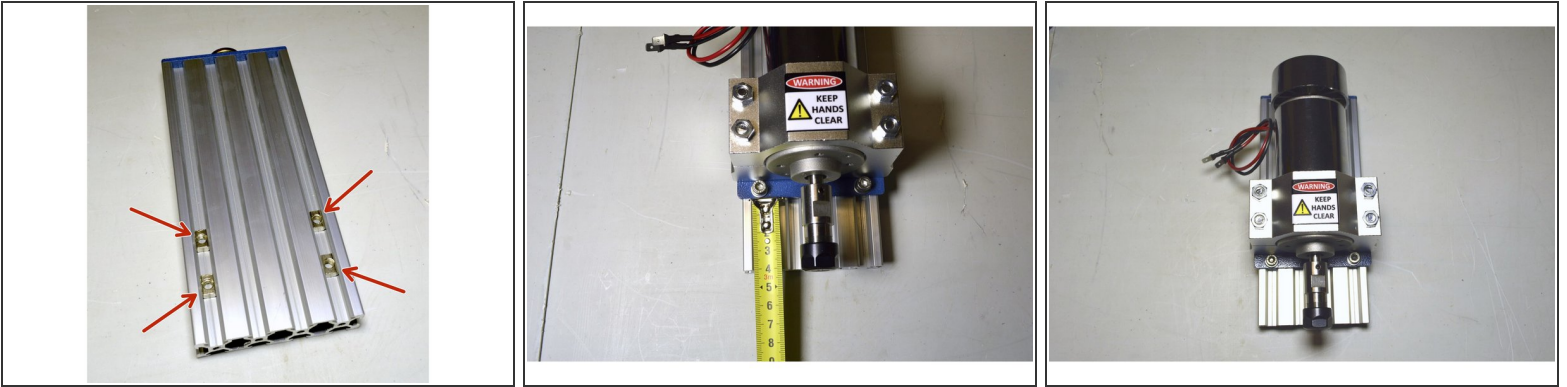


## Step 5 — Mount lead screw plate



- Place the Lead screw plate on top of the 20x80 V-Slot profile so that the open holes line up with the two threaded holes in the V-Slot profile
- Use the M5x16 cap screws (2 Pcs) and M5 Washers (2 Pcs) to mount the plate to the V-Slot profile
- Add Pratley Pratlock to the screws and use the 4mm Allen Key to tighten the screws

## Step 6 — Mount the Spindle Assembly



- Slide the M5 T-Nuts (4 Pcs) into the two outer slots of the V-Slot profile as shown
- Place the Spindle Assembly on the V-Slot profile so that the Spindle Plate is 40mm from the bottom of the profile
- Fasten the Spindle Plate to the V-Slot profile with the M5x10 cap screws (4 Pcs), M5 Washers (4 Pcs) and Pratley Pratlock by using the 4mm Allen Key