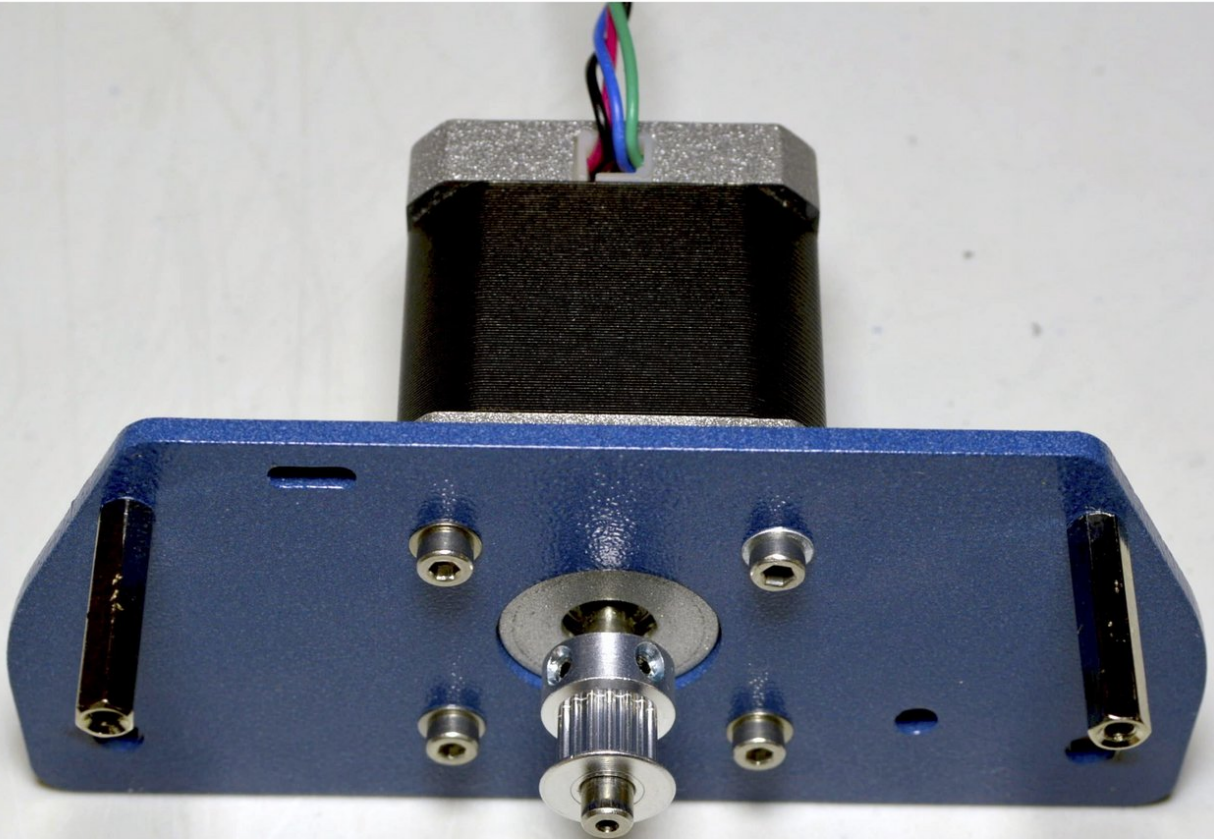


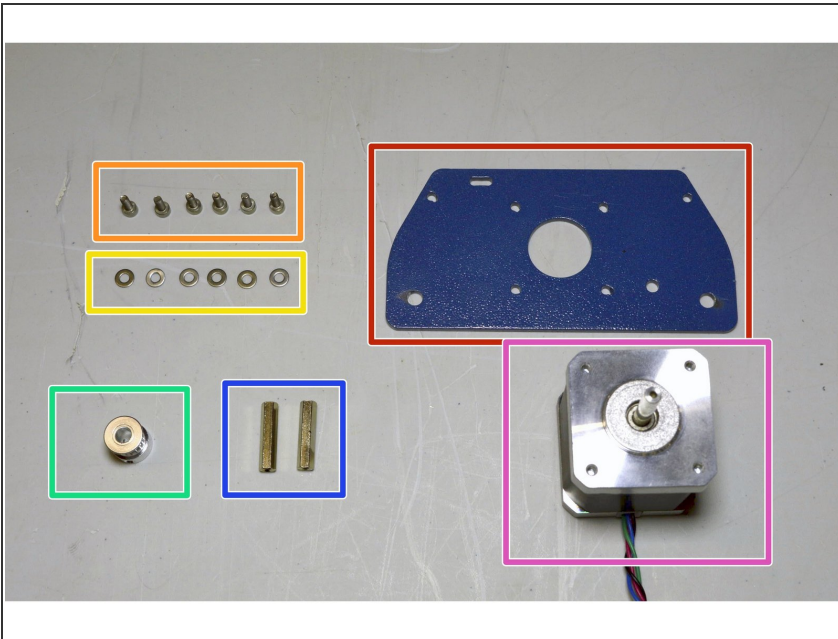
cron

07. X-Motor Assembly

Written By: Dozuki System

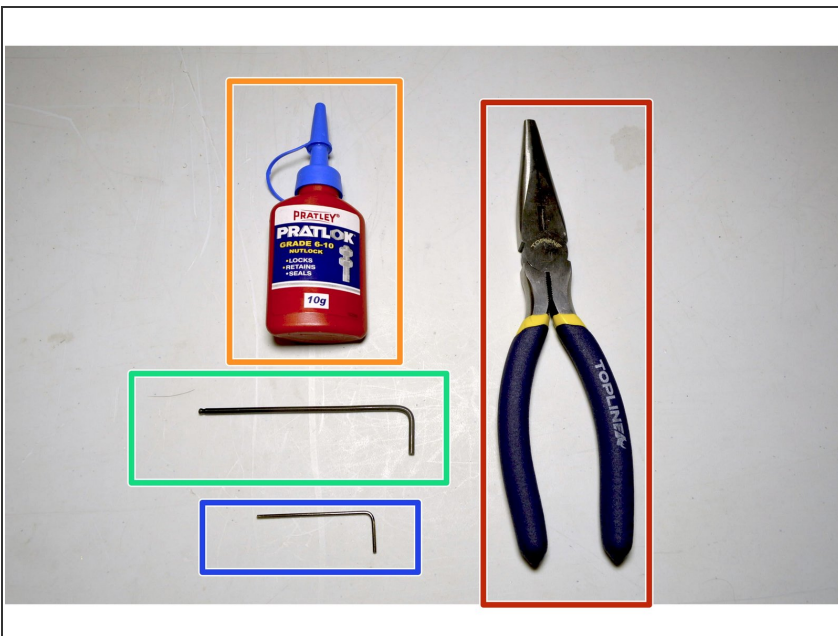


Step 1 — Parts required



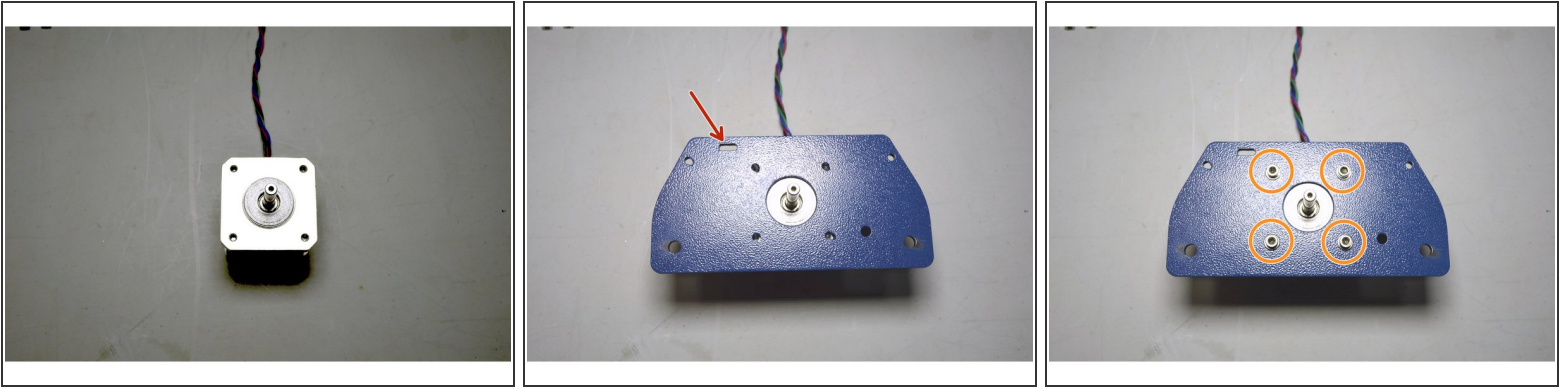
- X-Motor Plate
- M3x8 Cap Screws (6 Pcs)
- M3 Washers (6 Pcs)
- GT2 Pulley, 16 teeth
- Standoff M3x23, Female-Female (2 Pcs)
- X-Motor

Step 2 — Tools required



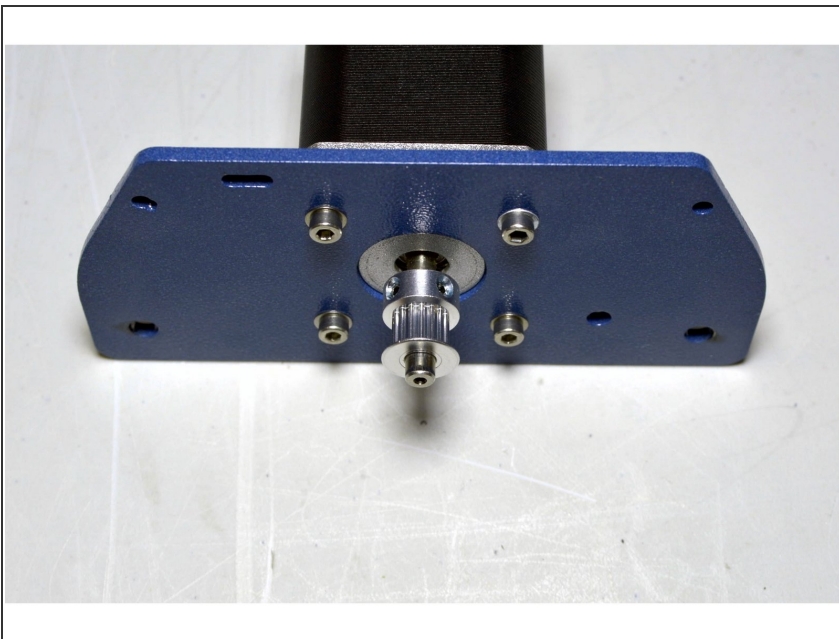
- Sharp Nose Pliers
- Pratley Pratlock
- 2.5mm Allen Key
- 1.5mm Allen Key

Step 3 — Mount the X-Motor



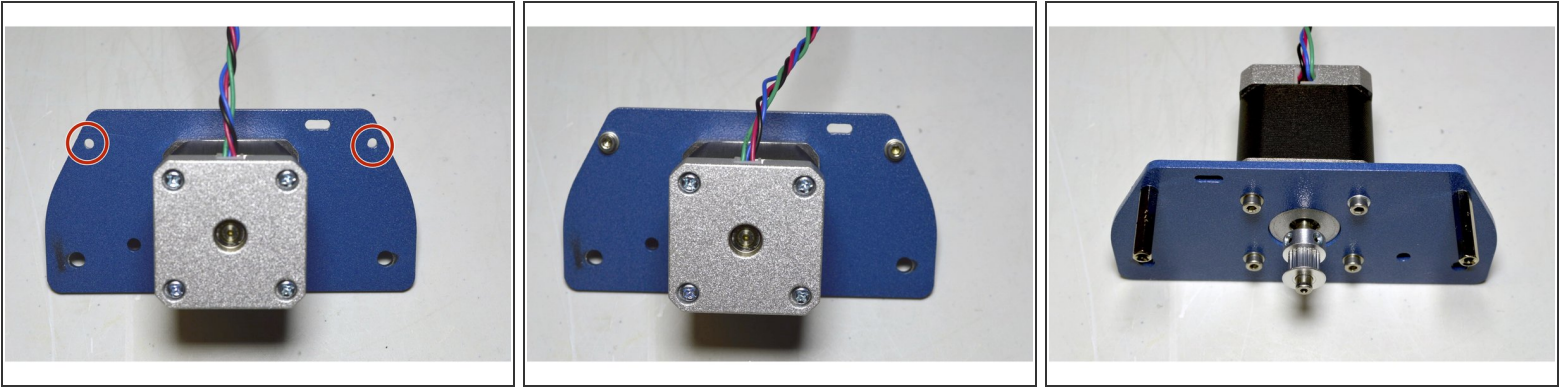
- Place the X-Motor on the table with the wires facing away to the top
- Place the X-Motor Plate on top of the X-Motor with the slot on the top left corner
- Mount the plate to the motor with the M3x8 cap screws (4 Pcs), M3 Washers (4 Pcs) and Pratley Pratlock
- Faster these screws with the 2.5mm Allen Key

Step 4 — Fix the pulley to the motor



- Slide the GT2 pulley onto the motor shaft with the bigger flanch facing the motor
- Add Pratley Pratlock to the grub screws
- Tighten the grub screws with the 1.5mm Allen Key

Step 5 — Mount standoffs



- Mount the M3x23 standoffs (2 Pcs) to the X-Motor Plate with the M3x8 cap screws (2 Pcs), M3 Washers (2 Pcs) and Pratley Pratlock
- Tighten the screws with the 2.5mm Allen Key while holding the standoff with the sharp nose pliers