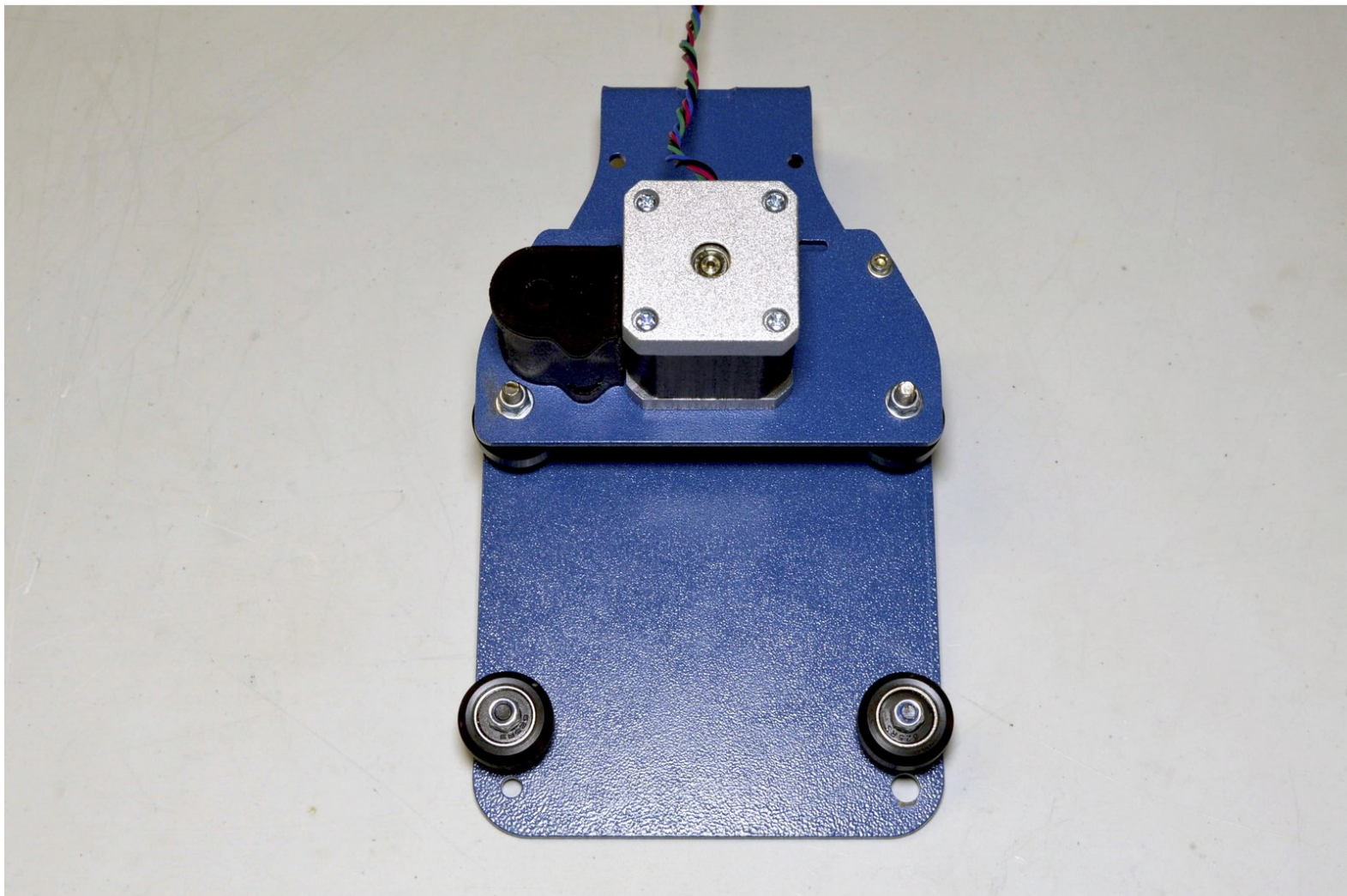


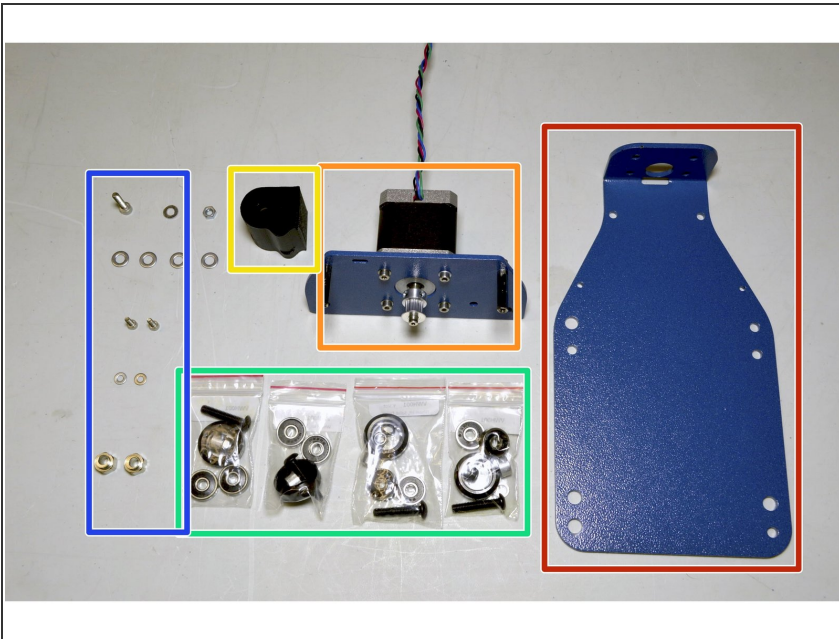
cron

08. X-Axis V-Wheel Assembly

Written By: Paul Cronje

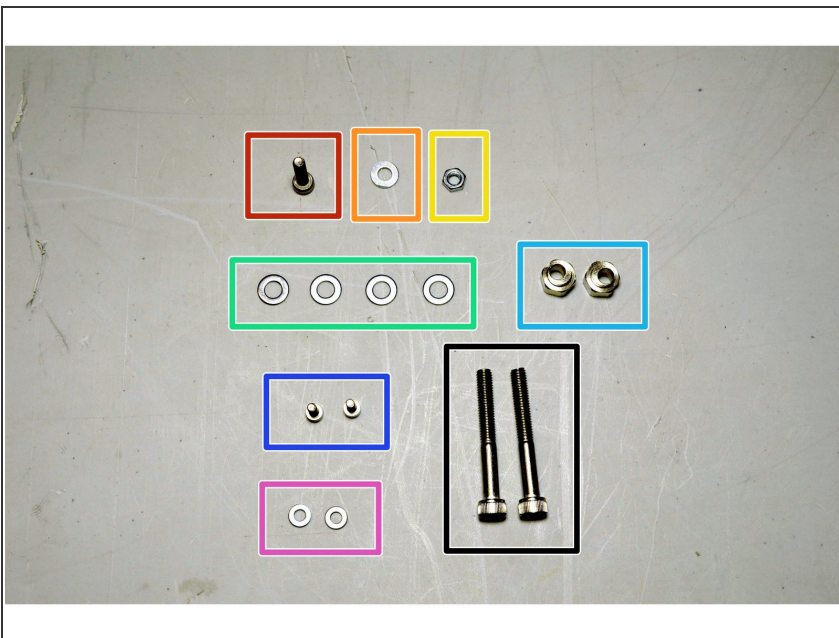


Step 1 — Parts required: 1



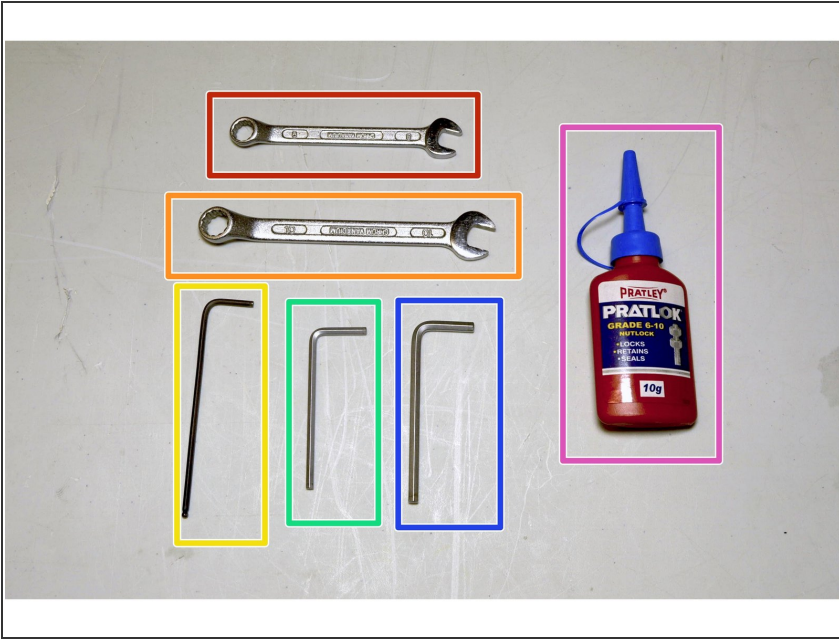
- Z-Axis Plate
- X-Motor Assembly
- X Drag chain motor bracket
- V-wheel kit (4 Pcs)
- Nuts & Bolts (See next step)

Step 2



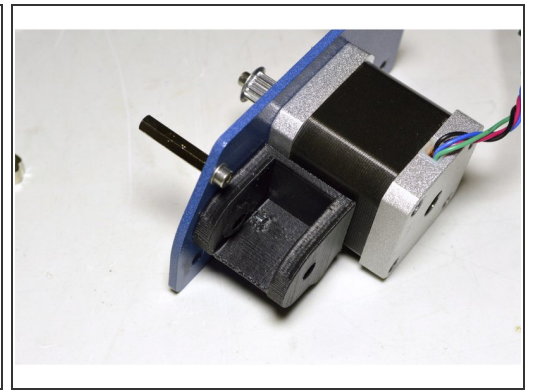
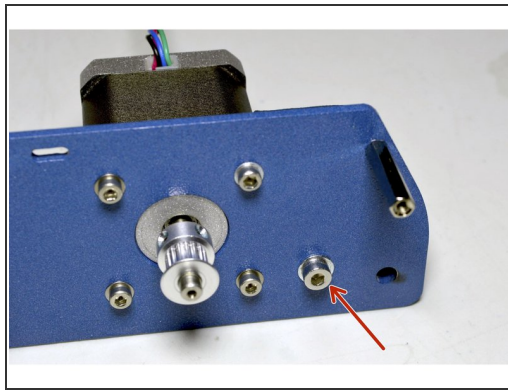
- M4x16 Cap Screw
- M4 Washer
- M4 Nut
- M5 Washer (4 Pcs)
- Eccentric Nut (2 Pcs)
- M3x8 Cap Screw (2 Pcs)
- M3 Washer (2 Pcs)
- M5x40 Cap Screw (2 Pcs)

Step 3 — Tools Required



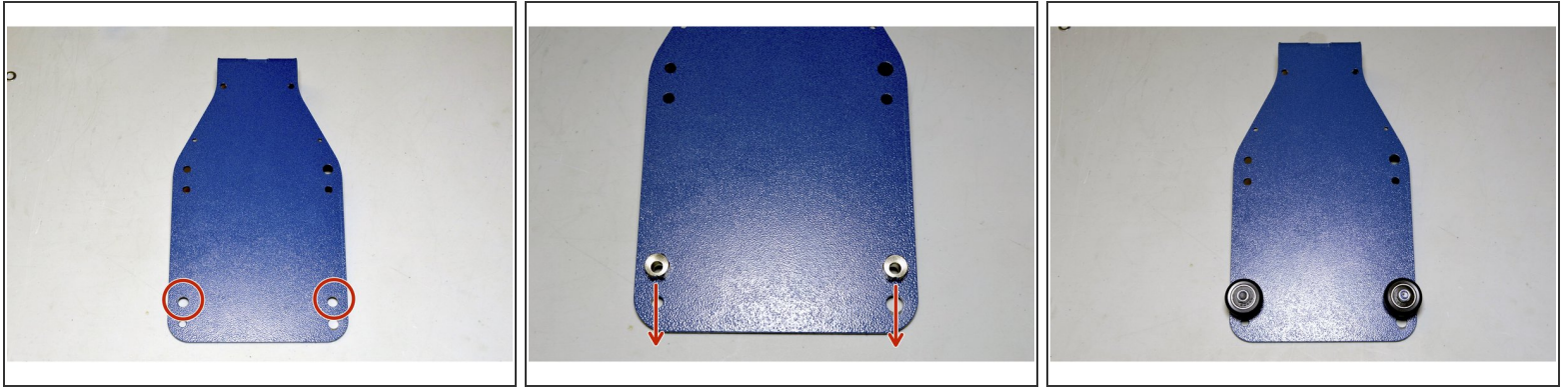
- No. 8 Spanner
- No. 10 Spanner
- 2.5mm Allen Key
- 3mm Allen Key
- 4mm Allen Key
- Pratley Pratlock

Step 4 — Attach Drag Chain Bracket



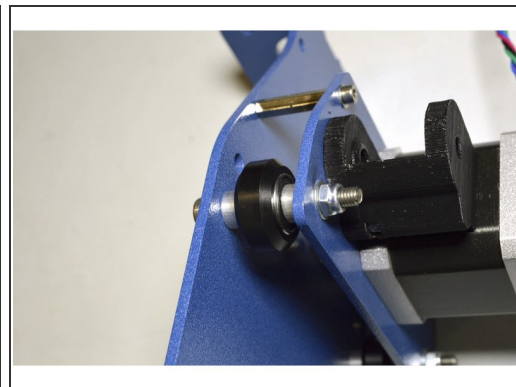
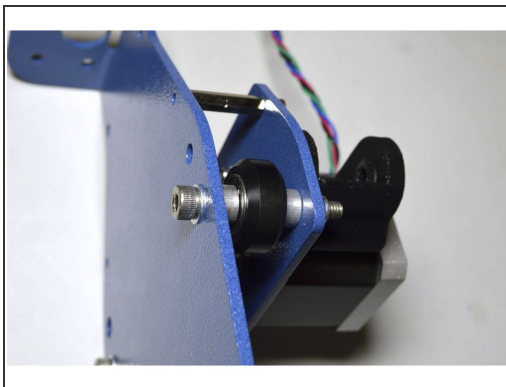
- Insert the M4 nut into the slot in the printed Drag Chain Motor Bracket
- Mount the bracket with the M4x16 cap screw, M4 washer and Pratley Pratlock to the motor plate as shown

Step 5 — Mount V-wheels



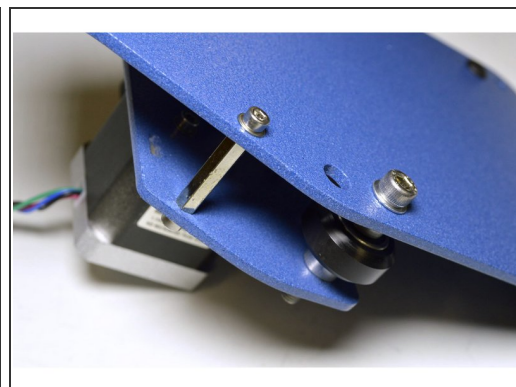
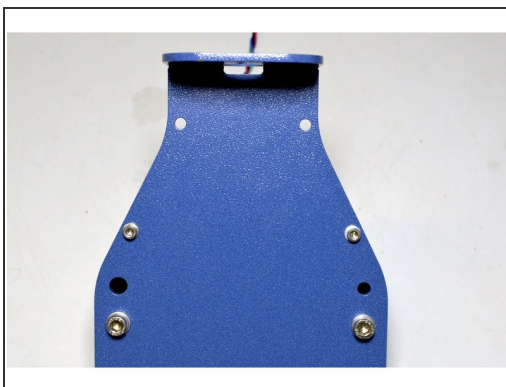
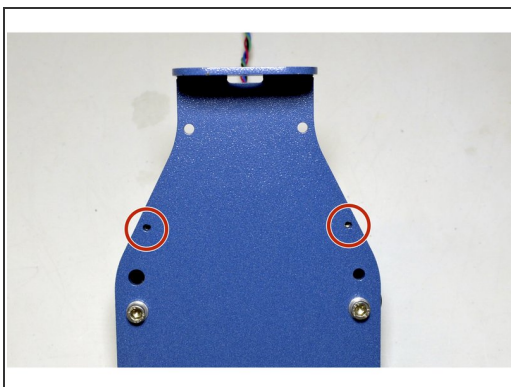
- Mount the V-wheels (2 Pcs) to the holes as indicated with the Eccentric nuts (2 Pcs)
- Make sure the notch in the Eccentric nuts are pointing downwards
- Use the No. 8 Spanner and 3mm Allen Key to tighten the V-Wheels
- Make sure the V-wheels can turn easily

Step 6 — Mount top V-Wheels



- Mount the other two V-Wheels between the Z-Axis Plate and the X-Motor Plate with the M5x40 screws (2 Pcs)
- Use the aluminium spacers that was left over from the first two V-Wheels to mount aluminium spacers on both sides
- The order of components on the M5x40 screw are: M5 Washer, Z-Axis plate, Aluminium spacer, V-wheel Assembly, Aluminium spacer, X-Motor Plate, M5 Washer, M5 Lock nut
- After tightening, make sure the V-Wheels can turn easily

Step 7 — Fix Standoffs



- Fix the loose end of the M3x23 standoffs with the M3x8 cap screws (2 Pcs), M3 Washers (2 Pcs) and Pratley Pratlock