

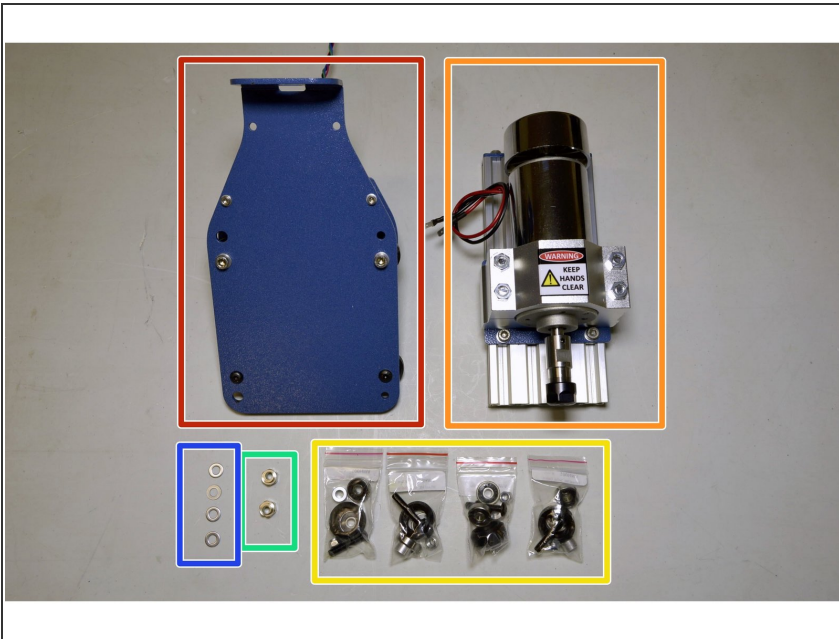
cron

09. Z-Axis V-Wheel Assembly

Written By: Paul Cronje

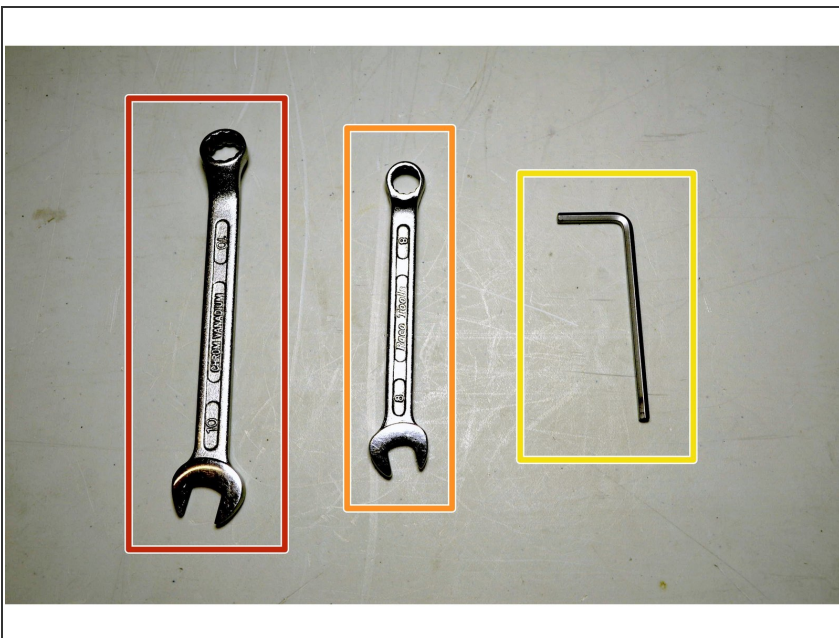


Step 1 — Parts Required



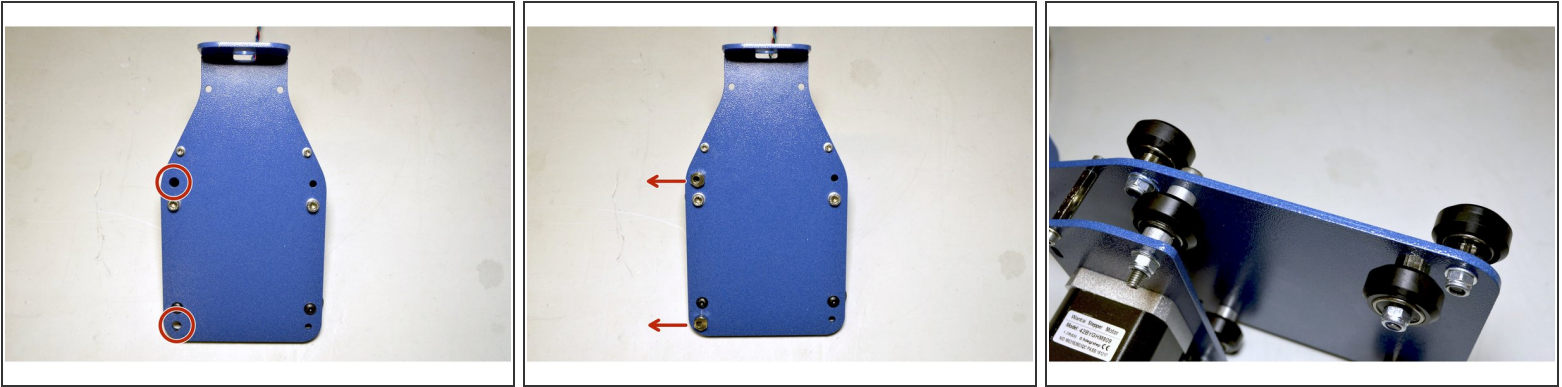
- Z Plate Assembly
- Spindle Assembly
- V-Wheel Kit (4 Pcs)
- Eccentric nut (2 Pcs)
- M5 Washer (4 Pcs)

Step 2 — Tools Required



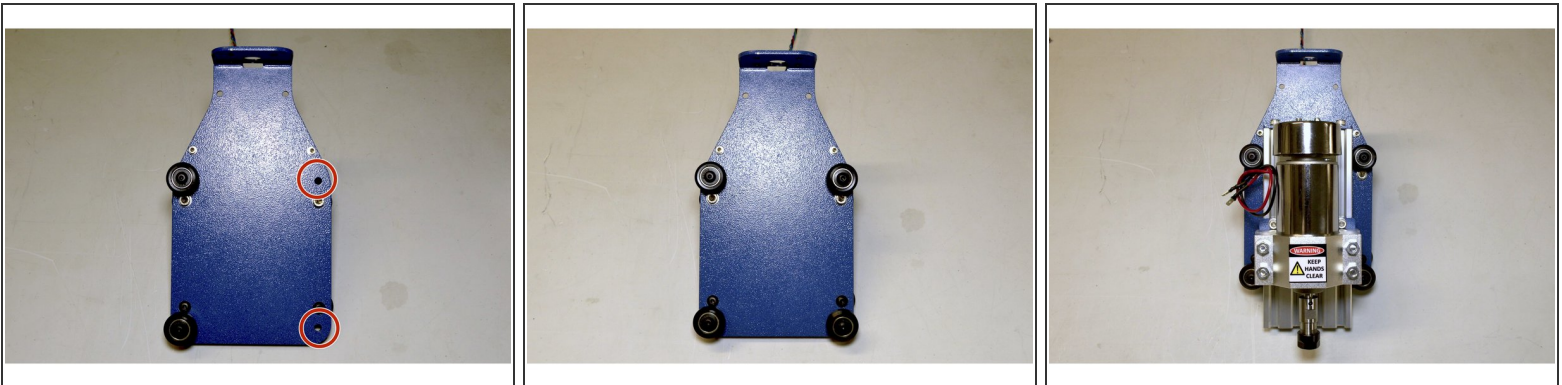
- No. 10 Spanner
- No. 8 Spanner
- 3mm Allen Key

Step 3 — Mount Floating V-Wheels



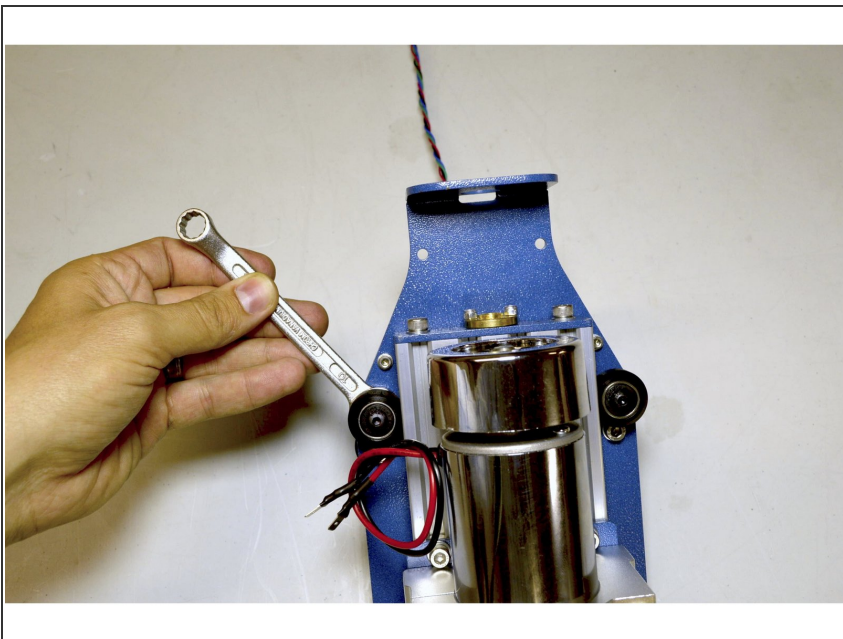
- Insert the eccentric nuts in the holes indicated with the notch of the eccentric nut pointing to the left
- Assemble the V-Wheels with the M5 Washers (2 Pcs) at the back of the plate
- Tighten the V-Wheels with the No. 8 Spanner and the 3mm Allen Key
- Make sure the V-Wheels can turn easily

Step 4 — Mount Fixed V-Wheels



- Mount the two remaining V-Wheels in the holes as indicated with the M5 washers (2 Pcs) as the back of the plate and only hand tighten the screws
- Insert the Spindle Assembly by pushing the two V-Wheels on the right to the right hand side
- Once the Spindle Assembly is in place, tighten the two V-Wheels on the right with the 3mm Allen Key and the No. 8 spanner
- Make sure the V-Wheels can turn easily

Step 5 — Adjust tension between V-Wheels



- Use the No. 10 Spanner to adjust the preload between the V-Wheels by turning the eccentric nuts on the two left V-Wheels
- Make sure the Z Axis can move up and down